

Your safety is important to us. When appropriate, please follow OSHA guidelines and utilize safety toe boots, hard hats and gloves, as well as eye, ear, and respiratory protection.

For more detailed information on Grand Ledge™, visit our Technical Guide at www.highformat.com or contact HIGH FORMAT® technical support.

TOOLS AND SUPPLIES

Required:

- Heavy Construction Vehicle (Rated to Safely Lift 2,000 lbs.)
- Chain (Rated to Safely Lift 2,000 lbs.)
- Rosetta Lifting Device
- Grand Ledge Installation Manual
- Plate Compactor
- Shovel
- Rake
- Level
- Sledgehammer
- String Line

Optional Tools:

- Transit Level
- Pinch Point Bar
- Cut Off Saw

Other:

- Non-woven Geotextile Fabric
- 4" Perforated Drain Pipe
- Geogrid (Reinforced Only)

INSTALLATION TIPS

- Blend Multiple Pallets: In order to achieve the best possible color blend, utilize material from multiple pallets simultaneously (when applicable).
- Shear Heel Removal (Base Row): Using a sledgehammer, knock the shear heels off the blocks to be used on the base row. This will make leveling the base row easier.
- Base Row: When setting the base course, align the blocks at the mold line - the line between the face texture and the back of the block. After setting each block, double-check for level both front to back and side to side. The more precisely the bottom row is placed, the easier the subsequent rows will install.
- Backfill Each Row: Always backfill the wall as you go. Stacking blocks without backfill could result in the wall falling over.
- Installation Guidelines: Follow all guidelines set forth in the Grand Ledge™ Installation Manual. Improper installation practices can result in wall failure.

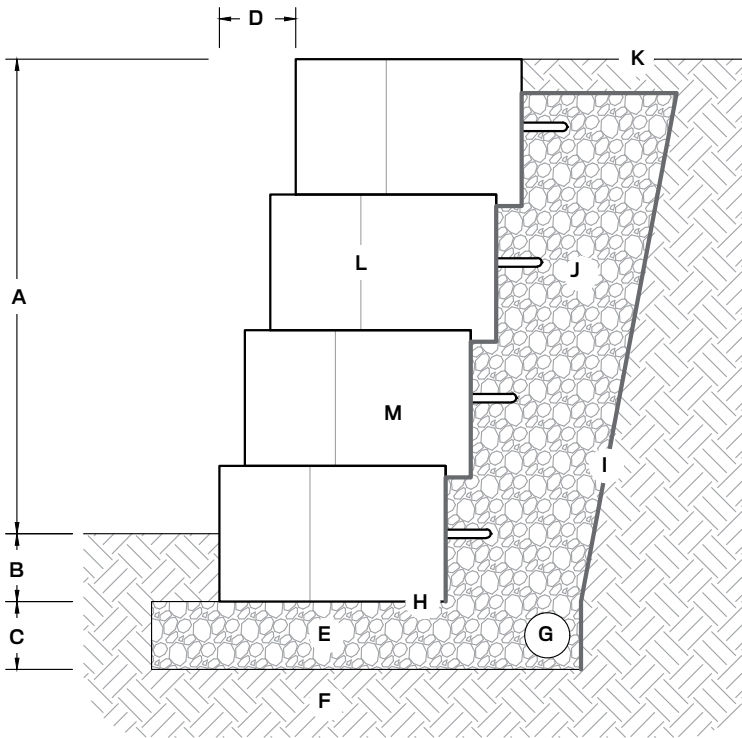


GENERAL NOTES FOR GRAND LEDGE™ WALL SECTIONS

This page shows typical construction details for Grand Ledge™ walls. These drawings are representative of major components required in wall construction. Specific details including reinforcement layers, drainage details, soil requirements, etc. shall be per engineered design for wall. For more cross-section and design options, visit our website.

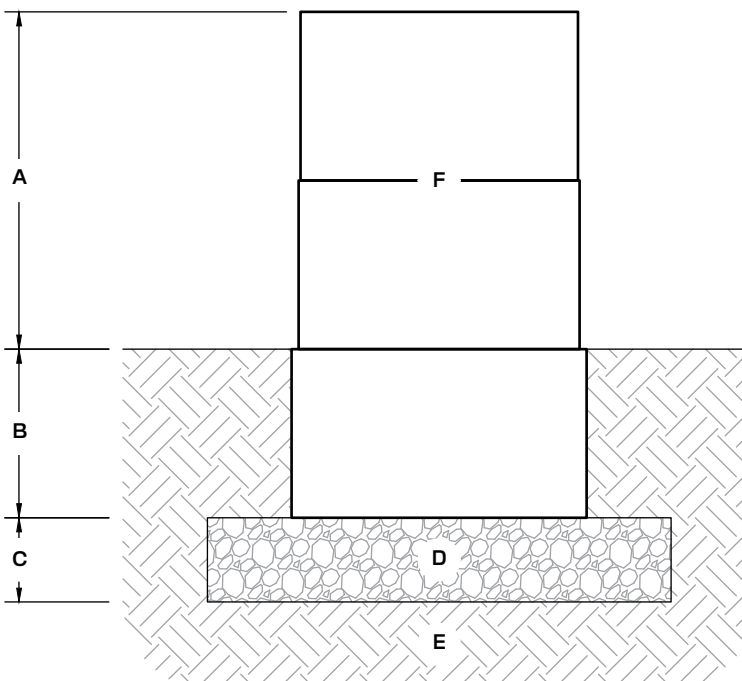
- These drawings are for preliminary reference only (not for final construction).
- Final designs for construction must be prepared by a registered professional engineer using the actual conditions of the proposed site and loads.
- Final wall design must address both internal and external drainage and shall be evaluated by the professional engineer who is responsible for the wall design.
- Block size and placement shown are for reference only individual Grand Ledge™ blocks will vary with installation pattern.

TYPICAL GRAVITY RETAINING WALL DETAIL



- A. Exposed height (varies)
- B. Bury depth (varies by design, min. 6")
- C. Leveling pad depth (varies by design, min. 6")
- D. Horizontal setback, 2-1/4" setback per 12" vertical (10.6° batter angle on wall)
- E. Crushed stone leveling pad
- F. Foundation soil compacted to 95% max. dry density
- G. 4" corrugated perforated drain pipe
- H. Shear heel removed from base block (optional)
- I. Non-woven geotextile fabric
- J. Drainstone (ASTM #57), min. 12" behind wall
- K. Finish grade to drain away from the wall
- L. Wall blocks
- M. Place 12" by 18" strip of geotextile fabric in V-shaped joint between blocks

TYPICAL FREESTANDING WALL DETAIL



- A. Exposed height (varies, max. 24")
- B. Bury depth (min. 6")
- C. Leveling pad depth (min. 6")
- D. Crushed stone leveling pad
- E. Foundation soil compacted to 95% max. dry density
- F. Freestanding wall blocks