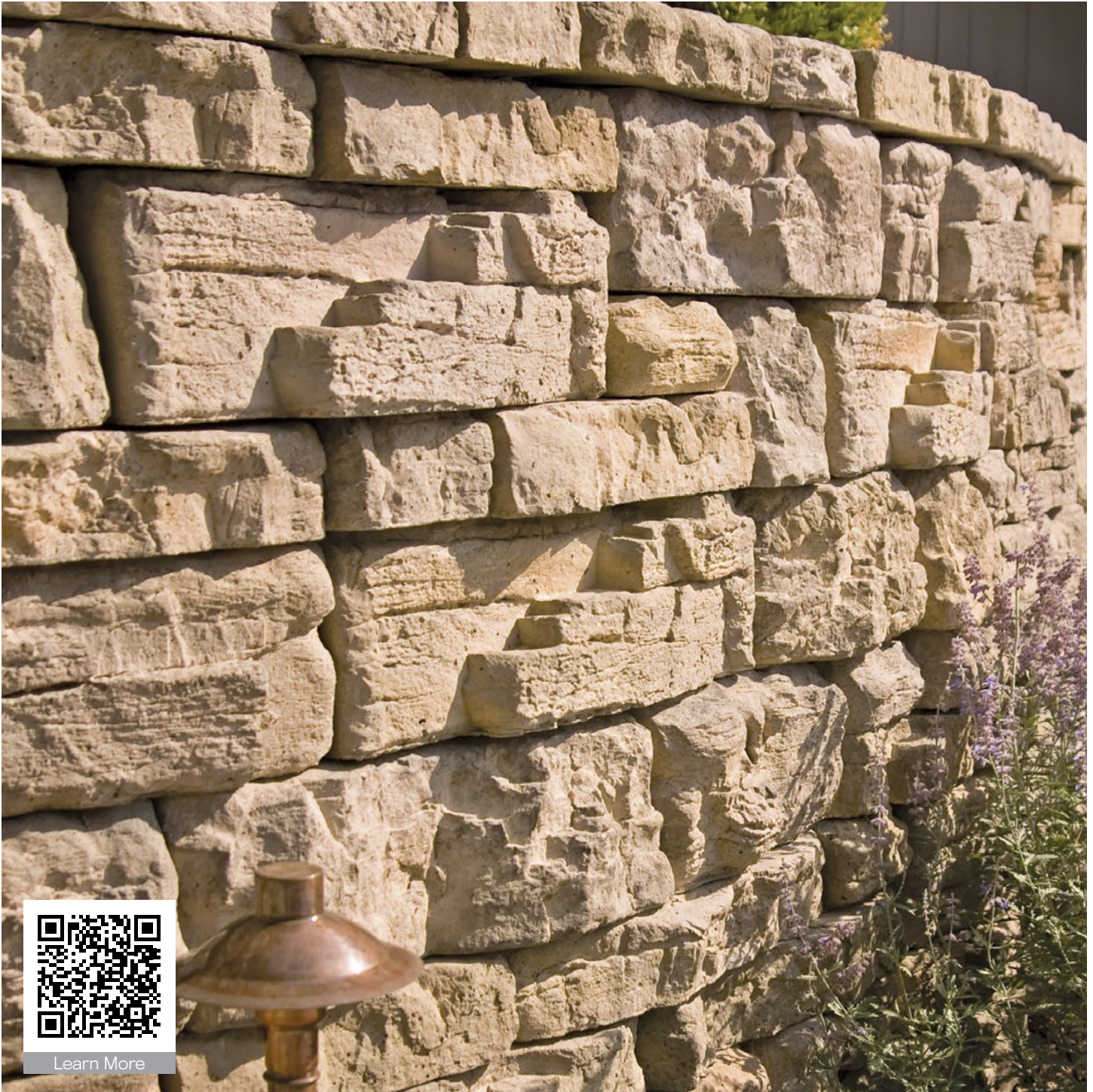




BELVEDERE® WALL



Learn More

HIGHFORMAT.COM
(877) 777-6558

FEATURES

- Natural stone texture on both the front and back with multiple face textures for each basic block size to provide a more random look
- Creates both freestanding and retaining walls
- Walls, columns, fire pits and more mean multiple creative possibilities
- Wall blocks are tapered on each side approximately 1" from the front to the back of the block
- Corner blocks are finished on three sides, the fourth side is tapered to fit with the wall blocks
- Corner blocks can be used to construct columns, create finished ends for walls, and make 90° corners
- Belvedere® Caps and Coping available to coordinate with wall product

MATERIAL ROSETTA® WETCAST

COLOR OPTIONS

FOND DU LAC



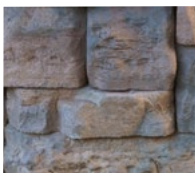
SLATE GRAY



LIMESTONE



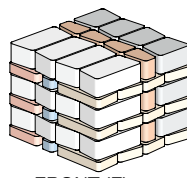
TERRAIN



Refer to our website for preliminary height guides and the most recent color offerings.

Average block weights of the different face texture patterns are shown. Weights of individual blocks may vary.

WALL PALLET



FRONT (F)	BACK (B)
6"L 3"H	4"L 3"H
12"L 3"H	10"L 3"H
18"L 3"H	16"L 3"H
6"L 6"H	4"L 6"H
12"L 6"H	10"L 6"H
18"L 6"H	16"L 6"H

Weight:
Coverage (Retaining):
Coverage (Freestanding):
Layers Per Pallet:
Section:

2,475± lbs (inc. pallet)
27 sq ft
25 sq ft
6
9 sq ft per 2 layers
(1 layer of 6", 1 layer of 3")

UNIT: 1

Weight: 10± lbs
Units Per Pallet: 12

UNIT: 2

Weight: 20± lbs
Units Per Pallet: 12

UNIT: 3

Weight: 36± lbs
Units Per Pallet: 12

UNIT: 4

Weight: 21± lbs
Units Per Pallet: 12

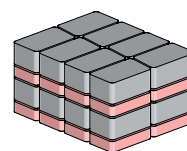
UNIT: 5

Weight: 42± lbs
Units Per Pallet: 12

UNIT: 6

Weight: 67± lbs
Units Per Pallet: 12

CORNER PALLET



FRONT (F)	BACK (B)
15"L 3" H	14"L 3" H
15"L 6" H	14"L 6" H

Weight:
Coverage:
Layers Per Pallet:
Section:

1,520± lbs (inc. pallet)
24 sq ft
4
1.5 sq ft (one 6" piece, one 3" piece)

CORNER UNIT: 7

Weight: 30± lbs
Units Per Pallet: 16

CORNER UNIT: 8

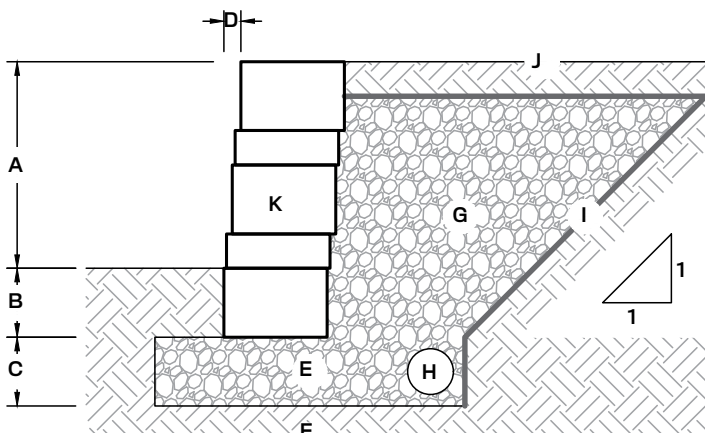
Weight: 58± lbs
Units Per Pallet: 16

NOTES FOR TYPICAL RESIDENTIAL INSTALLATION

This page shows a typical construction detail for Belvedere® walls. This drawing is representative of major components required in wall construction. Specific details including geotextile reinforcement layers, drainage details, soil requirements, etc. shall be per engineered design for wall.

- This drawing is for preliminary reference only (not for final construction).
- Final designs for construction must be prepared by a registered professional engineer using the actual conditions of the proposed site and loads.
- Final wall design must address both internal and external drainage and shall be evaluated by the professional engineer who is responsible for the wall design.
- Block size and placement shown are for reference only, individual Belvedere® blocks will vary with installation pattern.

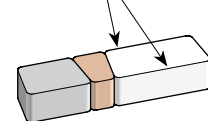
TYPICAL GRAVITY RETAINING WALL DETAIL



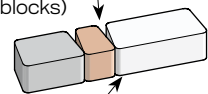
- Exposed height (varies)
- Bury depth (min. 6")
- Leveling pad depth (min. 6")
- 1/2" setback per 6" vertical (5°)
- Crushed stone leveling pad
- Foundation soil compacted to 95% max. dry density
- Drainstone (ASTM #57), min. 12", on 1:1 slope behind wall
- 4" corrugated perforated drain pipe
- Non-woven geotextile fabric
- Finish grade to drain away from the wall
- Wall blocks

TAPERS

FREESTANDING FACE OF WALL



RETAINING BACK OF WALL (Drainstone behind and between blocks)



FACE OF WALL