



EMPIRE STEPS



Learn More

HIGHFORMAT.COM
(877) 777-6558

FEATURES

- Beautiful and durable step treads with a crisp rockfaced texture on all four sides
- A lightly textured walking surface
- Consistent rise equals fast installation and safe end result
- Quality materials and long term durability

MATERIAL ROSETTA® WETCAST

COLOR OPTIONS

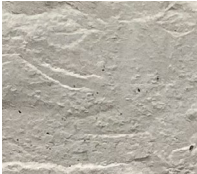
FOND DU LAC



SLATE GRAY



LIMESTONE



TERRAIN



Refer to our website for the most recent color offerings.

FACE TEXTURE

ROCKFACED



3' STEP PALLET

Weight: 3,050± lbs (inc. pallet)
Pieces Per Pallet: 8

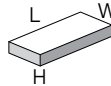


UNIT

Dimensions: 36"L x 18"W x 7"H (nominal)
Weight: 375± lbs

4' STEP PALLET

Weight: 3,800± lbs (inc. pallet)
Pieces Per Pallet: 6

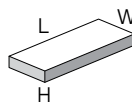


UNIT

Dimensions: 48"L x 21"W x 7"H (nominal)
Weight: 625± lbs

5' STEP PALLET

Weight: 3,400± lbs (inc. pallet)
Pieces Per Pallet: 4

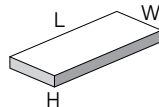


UNIT

Dimensions: 60"L x 24"W x 7"H (nominal)
Weight: 835± lbs

6' STEP PALLET

Weight: 4,000± lbs (inc. pallet)
Pieces Per Pallet: 3

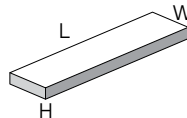


UNIT

Dimensions: 72"L x 30"W x 7"H (nominal)
Weight: 1,320± lbs

8' STEP PALLET

Weight: 4,200± lbs (inc. pallet)
Pieces Per Pallet: 3



UNIT

Dimensions: 96"L x 24"W x 7"H (nominal)
Weight: 1,375± lbs

18" RISER PALLET

Weight: 2,200± lbs (inc. pallet)
Pieces Per Pallet: 24



UNIT

Dimensions: 18"L x 7"W x 7"H (nominal)
Weight: 90± lbs

36" RISER PALLET

Weight: 2,000± lbs (inc. pallet)
Pieces Per Pallet: 12



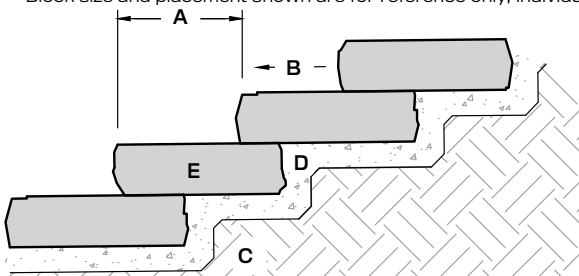
UNIT

Dimensions: 36"L x 7"W x 7"H (nominal)
Weight: 160± lbs

NOTES FOR TYPICAL RESIDENTIAL INSTALLATION

This page shows a typical detail for steps.

- This drawing is for preliminary reference only (not for final construction).
- Final designs for construction must be prepared by a registered professional engineer using the actual conditions of the proposed site and loads.
- Block size and placement shown are for reference only, individual steps vary with installation pattern.



- Tread width varies (12" or more is desirable)
- Slope 1-2% (to allow drainage)
- Compact subbase material to a minimum of 95% max. dry density (or as specified by Engineer)
- Free-draining granular material (3" thick minimum compact to a min. of 95% max. dry density)
- Step block