



## BELVEDERE® FIRE PIT



**HIGHFORMAT.COM**  
**(877) 777-6558**

## FEATURES

- Featuring the look of weathered fieldstone
- Includes 52 wetcast concrete stones and a 14-gauge steel liner

## MATERIAL

ROSETTA® WETCAST

## COLOR OPTIONS

FOND DU LAC



SLATE GRAY



LIMESTONE

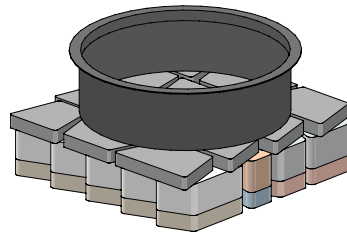


TERRAIN



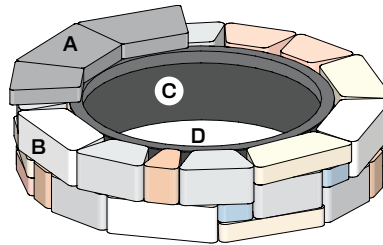
Refer to our website for the most recent color offerings.

## PALLET



Pallet Dimensions: 42"L x 42"W x 30"H  
Weight: 1,320 lbs (inc. pallet)

## TYPICAL INSTALLATION



Finished Dimensions: 58" Dia. x 14-1/2"H

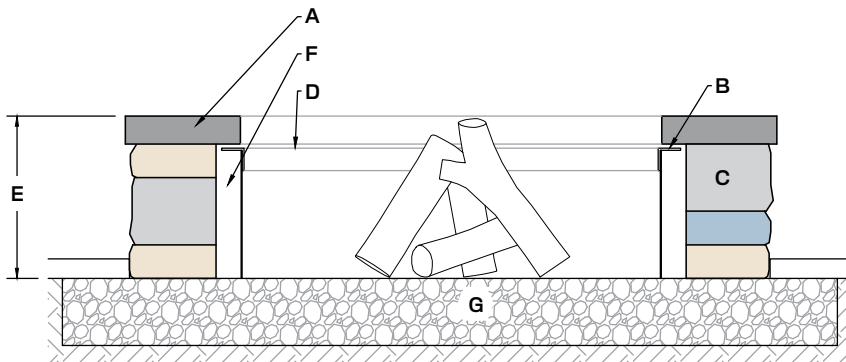
- A. Cap layer (three Cap Blocks shown for reference)
- B. Belvedere® Fire Pit Blocks
- C. 14-gauge steel ring (36" dia. opening)
- D. 6" minimum drainstone base underneath

## INSTALLATION NOTES

1. Familiarize yourself with the construction details shown on this page.
2. Mark out the location for your fire pit. Note dimensions shown are nominal so mark an area slightly larger than shown.
3. Excavate for drain stone base (approx. 6")
4. Fill excavated area with drain stone, level, and compact.
5. Place and center steel ring on prepared base.
6. Place blocks per the pattern. (For Round Kit, keep Blocks 1 1/2" off steel ring)
7. **WARNING!** Do not place the fire pit directly atop a patio surface. Instead, the fire pit should be "cut in" to the patio surface to avoid damage to the patio caused by conductive heat transfer.
8. After placing blocks around the ring, adjust the blocks in or out to make the circle close and fit tight. If the blocks do not close the circle, move all blocks slightly in. If the blocks seem too long, move the blocks slightly out.
9. Place caps in circle around fire pit. Adjust the caps in or out to make them fit tightly together.
10. Note: Not suitable for large fires. Fire size should not allow flame to contact Caps on Round Fire Pit.

Belvedere® Fire Pit Kits are also available in gas-burning and Breeo® smokeless wood-burning configurations.

## CROSS SECTION



- A. Caps
- B. Caps do not contact lip of steel ring
- C. Belvedere® Fire Pit Blocks
- D. 14-gauge steel ring (36" dia. opening)
- E. 14-1/2" overall height
- F. ±2" gap
- G. 6" minimum drainstone base underneath

## BLOCK PATTERN ELEVATION

