



HIGH FORMAT®

SUPERIOR STEPPERS



Learn More

HIGHFORMAT.COM
(877) 777-6558

FEATURES

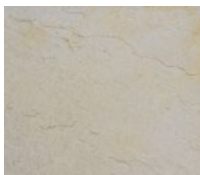
- Eight different shapes for a rustic, authentic stone appearance
- Various color offerings compliment your existing backyard environment

MATERIAL

ROSETTA® WETCAST

COLOR OPTIONS

FOND DU LAC



SLATE GRAY



LIMESTONE

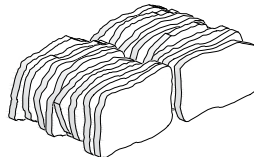


TERRAIN

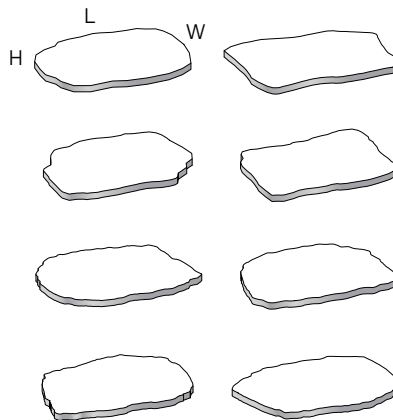


Refer to our website for the most recent color offerings.

PALLET



Weight: 1,300 lbs (inc. pallet)
Coverage: 52 sq ft
Pieces Per Pallet: 16 (random assortment)
Section: 3.25 sq ft per 1 piece



UNITS: 1 - 8

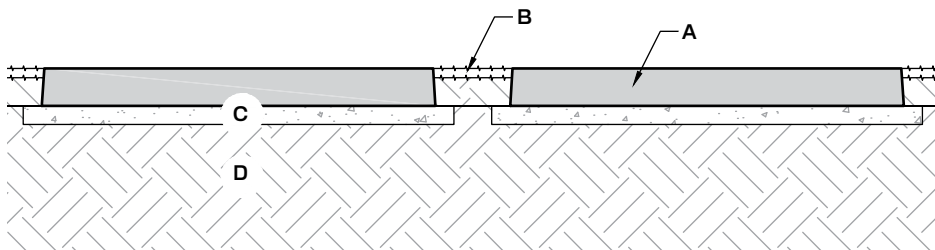
Dimensions: 27"L x 21"W x 2"H
Weight: 78 lbs
Coverage: 3.25 sq ft

NOTES FOR TYPICAL RESIDENTIAL INSTALLATION

This page shows a typical detail for Superior Steppers.

- This drawing is for preliminary reference only (not for final construction).
- Block size and placement shown are for reference only, individual steps vary with installation pattern.

TYPICAL INSTALLATION



- A. Superior Stepper Stone (2" (50 mm) thick)
- B. Turf between Superior Stepper Stones
- C. Coarse bedding sand min. 1" (25 mm) thick compacted
- D. Compacted existing sub-grade