



IRREGULAR STEPS



HIGHFORMAT.COM
(877) 777-6558

FEATURES

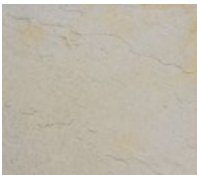
- Stone-like shapes and textures create inviting walkways
- Consistent rise equals fast installation and safe end result
- Quality materials and long term durability
- Multiple natural color blends available
- Complimentary products offer a variety of creative possibilities

MATERIAL

ROSETTA® WETCAST

COLOR OPTIONS

FOND DU LAC



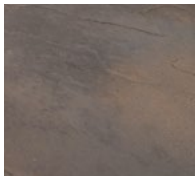
SLATE GRAY



LIMESTONE



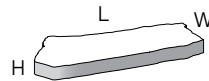
TERRAIN



Refer to our website for the most recent color offerings.

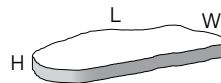
STANDARD 7" RISE PALLET

Weight: 4,200± lbs (inc. pallet)
Pieces Per Pallet: 8 (random assortment)



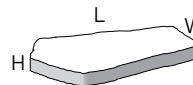
UNIT: 1

Dimensions: 54"L x 24"W x 7"H
Weight: 458± lbs



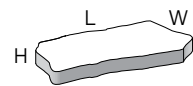
UNIT: 2

Dimensions: 60"L x 24"W x 7"H
Weight: 600± lbs



UNIT: 3

Dimensions: 48"L x 28"W x 7"H
Weight: 567± lbs



UNIT: 4

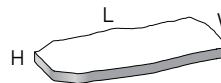
Dimensions: 48"L x 24"W x 7"H
Weight: 512± lbs

WEATHERED FACE



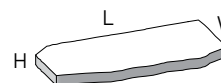
LARGE 6' PALLET

Weight: 3,900± lbs (inc. pallet)
Pieces Per Pallet: 3 (random assortment)



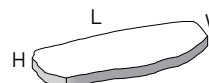
UNIT: 1

Dimensions: 72"L x 30"W x 7"H
Weight: 1,300± lbs



UNIT: 2

Dimensions: 72"L x 30"W x 7"H
Weight: 1,300± lbs



UNIT: 3

Dimensions: 72"L x 30"W x 7"H
Weight: 1,300± lbs

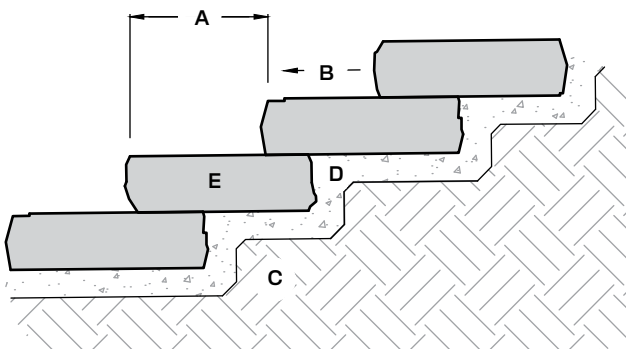
SNAPPED FACE



NOTES FOR TYPICAL RESIDENTIAL INSTALLATION

This page shows a typical detail for steps.

- This drawing is for preliminary reference only (not for final construction).
- Final designs for construction must be prepared by a registered professional engineer using the actual conditions of the proposed site and loads.
- Block size and placement shown are for reference only, individual steps vary with installation pattern.



- A. Tread width varies (12" or more is desirable)
- B. Slope 1-2% (to allow drainage)
- C. Compact subbase material to a minimum of 95% max. dry density (or as specified by Engineer)
- D. Free-draining granular material (3" thick minimum compact to a min. of 95% max. dry density)
- E. Step block